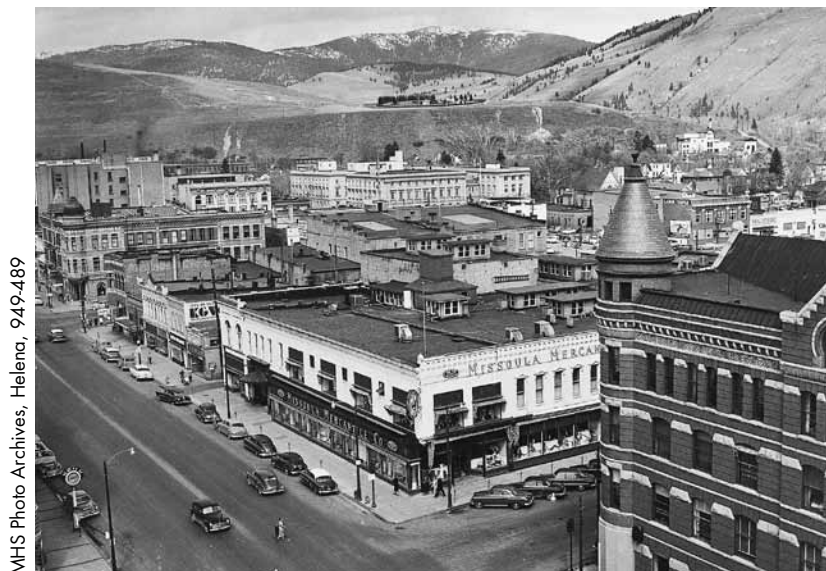


## CHAPTER 17 / Comparing Photographs

The photographs below were both taken in Missoula, Montana. The one on the top is from 2008 and the one on the bottom is from 1952. Study the photographs, and then answer the questions that follow.



a.



b.

- (1) What is the subject of the photographs?
- (2) Which photo shows an older part of town and which picture shows a newer part of town?  
How can you tell?
- (3) List some of the similarities and differences between the two photographs.

### Critical Thinking

What role do you think cars played in shaping these two streetscapes?